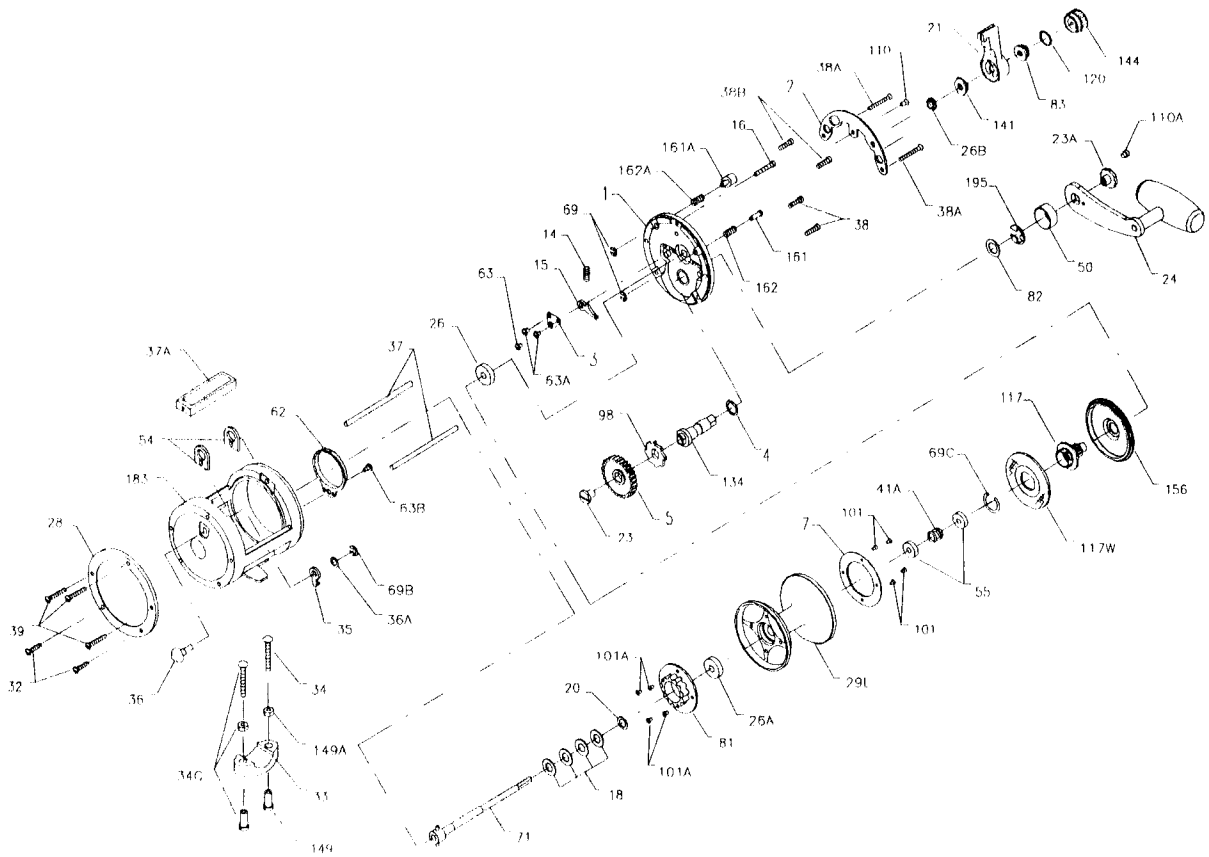




PARTS AND PRICE LIST FOR MODEL 245LD



Key No.	Part No.	Description	Price	Key No.	Part No.	Description	Price
1	001 245	Right Side Plate Assembly	\$11.00	50	050 040	Gear Stud Cover	\$2.00
2	002 040	Quadrant Ring	6.25	54	054 113	Harness Lug (2 req.)	1.70
3	003 040	Dog Bridge	1.50	55	055 006	R.S. Spool Ball Bearing (2 req.)	13.25
4	004 040	Gear Stud Washer	.50	62	062 040	Click Spring	2.00
5	005 045	Main Gear	9.90	63	063 349	Lower Dog Bridge Screw	.80
7	007 040	Metal Drag Washer	6.60	63A	063 500S	Upper Dog Bridge Screw (2 req.)	.80
14	014 040	Dog Spring	.60	63B	063 500S	Click Spring Screw	.80
15	015 040	Dog	1.35	69	069B050	Retaining Ring (2 req.)	.80
16	016 009	Top R.S. Plate Screw	.45	69B	069B600	Click Button Retaining Ring	.90
18	018 040	Clutch Disc Spring	.80	69C	069C245	Retaining Ring	.90
20	020 040	Thrust Washer	.50	71	071 040	Spindle Spool Assembly	12.00
21	021 245	Drag Lever Assembly	5.50	81	081 040	Click Ratchet	3.10
23	023 006CH	Gear Mounting Screw	1.40	82	082 040	Handle Shim	.45
23A	023 114	Handle Screw Assembly	2.65	83	083 245	Preset Collar	2.75
24	024 040P	Handle Assembly	13.50	98	098 040	Main Gear Ratchet	1.50
26	026N040	R.S. Plate Ball Bearing	12.00	101	101 030	Metal Drag Washer Screw (4 req.)	.45
26A	026 040	L.S. Spool Bearing	12.00	101A	101 030	Click Ratchet Screw (4 req.)	.45
26B	026 045	R.S. Bushing	.75	110	110 050	Quadrant Ring Screw	.50
28	028 040	Left Side Ring	7.05	110A	110 060	Handle Lock Screw	.45
29L	029L245	Spool Assembly	33.00	117	117 245	Drive Plate Assembly	12.50
32	032 310	Lower L.S. Ring Screw (2 req.)	.40	117W	117W245	Drive Plate Washer	8.00
33	033 113	Rod Clamp	4.00	120	120 245	O-Ring	.60
*	*033R200	Ringed Rod Clamp	6.25	134	134 040	Gear Stud	6.25
34	034 045	Rod Clamp Screw (2 req.)	1.00	141	141 245	Lever Cam Follower	2.75
35	035 040	Click Tongue	1.40	144	144 040	Preset Knob	6.75
36	036N209	Click Button	1.05	149	149 045	Rod Clamp Nut (2 req.)	1.00
36A	036A040	Click Button Washer	.40	149A	149 200	Hex Nut (2 req.)	.50
37	037 040	Frame Post (2 req.)	1.95	156	156 245	Drag Cover	3.25
37A	037A245	Top Spacer Bar	5.50	161	161 025	Free Spool Button Spring	1.25
38	039 005	Lower R.S. Plate Screw (2 req.)	.40	161A	161 040	Strike Button Assembly	1.30
38A	038 040	R.S. Post Screw (2 req.)	.40	162	162 050	Free Spool Button Spring	.50
38B	032 022	Upper R.S. Plate Screw (2 req.)	.40	162A	162 050	Strike Button Spring	.50
39	039 009	L.S. Post Screw (3 req.)	.40	183	183 245	Frame Assembly	38.00
41A	041A045	Bearing Spring	1.00	195	195 040	Gear Stud Retaining Ring	.70